

MONTHLY MEMBERSHIP PROGRESS REPORT

District 202 L

Results as of: 12/31/2023

GMT:

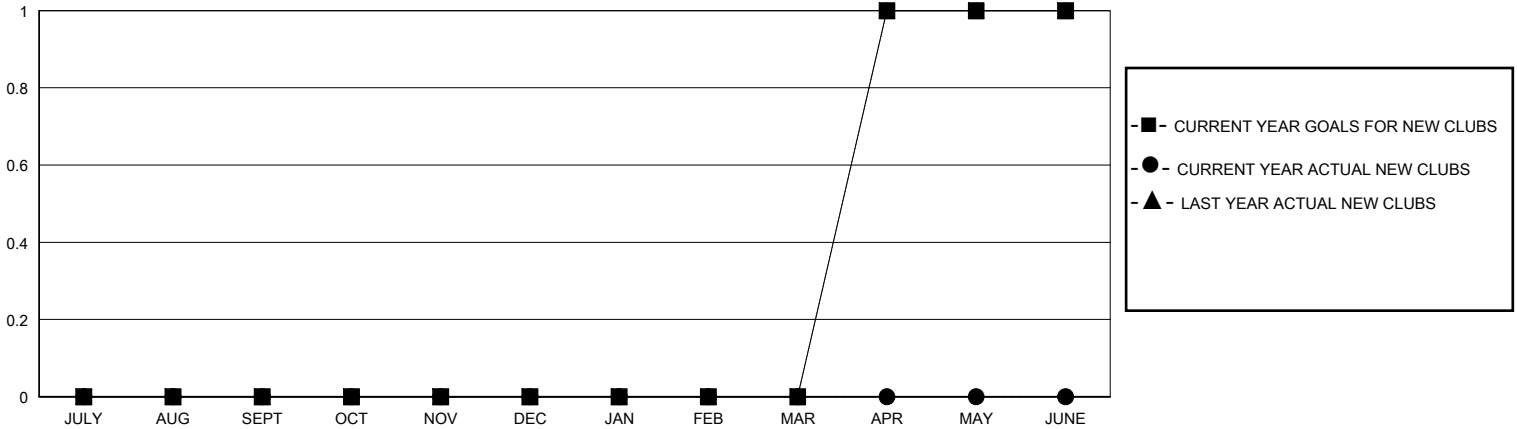
LOCATION NEW ZEALAND

GMT CA

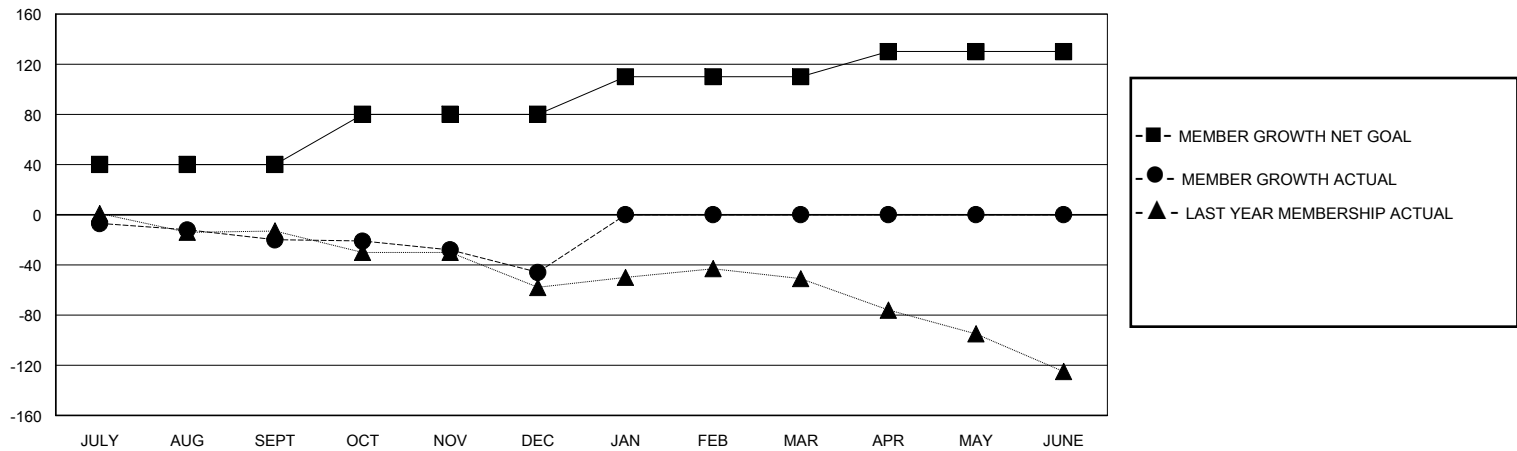
Clubs			
RESULTS FOR 2023-2024			
QUARTER	NEW CLUB GOAL	NEW CLUBS	DROPPED CLUBS
JULY/AUG/SEPT	0	0	0
OCT/NOV/DEC	0	0	1
JAN/FEB/MAR	0	0	0
APR/MAY/JUNE	1	0	0

Members			
RESULTS FOR 2023-2024			
QUARTER	MEMBER GROWTH NET GOAL	MEMBER GROWTH ACTUAL	DROPPED MEMBERS ACTUAL (including transfers)
JULY/AUG/SEPT	40	35	46
OCT/NOV/DEC	40	32	54
JAN/FEB/MAR	30	0	0
APR/MAY/JUNE	20	0	0

GOALS AND ACTUAL NEW CLUBS CUMULATIVE



GOALS AND ACTUAL MEMBERS CUMULATIVE



DROPPED CLUBS: 1	25 CLUBS OF 53 ADDED 1 OR MORE NEW MEMBERS	GENDER DISTRIBUTION MALE 892 (67.17%) FEMALE 435 (32.76%)
DROPPED MEMBERS DECEASED 8 CLUB CANCELLED 0 OTHER 92 TOTAL 100	CLICK HERE FOR CUMULATIVE MEMBERSHIP DATA	TOTAL FAMILY UNIT MEMBERS 144 FAMILY MEMBERS PAYING HALF DUES 72